

Instruction Manual

Digital Motor Protection Relay (DMP Series)

META
MEC Series

Thank you for purchasing the LG Inc.DMP Series.

SAFETY PRECAUTIONS

Be sure to read the instruction manual and safety precautions before use products.

This manual should be given to the person who actually uses the products and is responsible for their maintenance.

⚠ WARNING : Offending against the message will result in death or serious injury.

⚠ CAUTION : Incorrect handling of the device may result in minor injury or physical damage.



■ Introduction

- Digital three-phase Ammeter and various Motor protection function. The amount of the three-phase current is each displayed by pressing the key. In normal, the maximal current is always displayed.
- By using the Bar-LED arrays. The loading ratio is always displayed from 60% to 110% in normal.
- Extensive current range : 0.5 ~ 60A
- The trouble cause is displayed in the indicator, is easy to recover it.



WARNING

- Turn off the upstream breaker before installing or service to prevent electric shocks and burn due to short circuit.
- Do not touch any live naked terminals.

It may cause an electric shock.



CAUTION

■ Installation

- Compare the product with that order us.
The Product which is different from order is may cause a malfunction or a fire.
- Check the parts to miss or crack by transportation
- Installation, maintenance and inspection of the product should be performed by qualified engineers having special knowledge.
- Be careful not to exchange with main units and display units in combining.

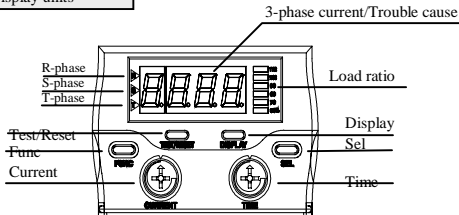
It may cause a current indication error.



CAUTION

- Check the communication cable to insert smoothly.
- Combine the display units with the main units in tight, Or its Relay contact is opened.
- Please check the relay by pressing the TEST/RESET Key before running the Motor,
- Insert the finger proof necessarily in the terminal block, after wiring in case of screw type products.
- Refer to wiring diagram for proper terminal connection.
- After wiring, Cover the Finger Proof necessarily.
- Use the product in a range of the rated voltage and current shown on the name plate.
It may cause a malfunction.
- When the device useless, it should be dispose of them as an Industrial waste.

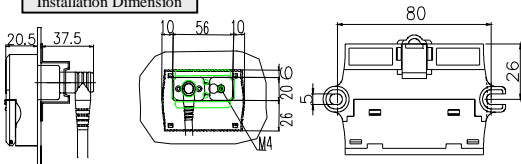
Display units



Trouble information

Protection	show	Description
Overcurrent	O-L	More than set current Within the set time
Undercurrent	Und	Lower than the undercurrent set ratio Within 3S
Reverse phase	r-P	Within 0.1S
Phase Loss	P-F	Over 70% of the rate of unbalance : Within 3S
Phase unbalance	P-F	Over 50% of the rate of unbalance : Within 5S
STALL	StL	180% than setting current within 5S
LOCK	Loc	More than the lock set current ratio : Within 0.5S
Instantaneous Current	Sho	More than the instantaneous set current ratio : Within 0.1S
Ground fault	g-F	More than the set ground current within the set time
Alert	Bar-Leds	Load Ratio(60~110%)

Installation Dimension



Ordering Method

DMP	06	S	E	Z	220
-----	----	---	---	---	-----

Current		Wiring		TYPE		OPTION		control Volt.	
06	0.5~6.0A	S	Screw	E	Separate	Z	Ground	220	AC220V
60	5.0~60A	T	Tunnel	-	Unify	I	Instant.	110	AC110V



LG Industrial Systems Co., Ltd.

☞ Refer to the catalog and home page(www.lgis.com)
for further details.

- Client Consultation center :
LG ,Kayang, Kangseo-gu, Seoul 157-803, Korea
(TEL: 82-1544-2080 FAX: 82-2-3660-7021)

MEMO

7956 2121 001