

# LSIS VFD Firmware Flash Procedure

## iS7

### Purpose

This document provides the step by step procedure for flashing firmware on an LSIS iS7 VFD using the Smart Copier. This procedure should be followed whenever an application demands custom application specific firmware or an update to the latest factory firmware.

For questions or assistance with this procedure please contact LSIS Technical Support.

Phone: 800-891-2941 Email: tech\_support.us@lsis.com

### 1. Necessary Items

- Smart Copier (the below items are included with purchase) **LSIS Order Code: 64090112**
  - 4 qty AA Batteries
  - SD Card
- Smart Copier Gender (order both this and the Smart Copier!) **LSIS Order Code: 64090124**
  - 10-pin cable
  - Gender Connectors for S100, H100, and iS7
- Computer with SD card slot
- Flash File
- LSIS iS7 VFD

### 2. Preparing the Firmware File

- a. Request the needed firmware file from LSIS Technical Support.
- b. The Smart Copier uses a .scf file type though the .scf is not listed in Windows explorer. Verify the correct file type by right-clicking the file and selecting "properties." The file type .scf is listed. See Figure 1.
- c. Insert the SD card which came with the smart copier into the PC.
- d. Create a new folder on the SC card titles "firmwares".
- e. Drag and Drop or Copy/Paste the firmware file into the "firmwares" folder on the SD Card.
- f. Remove the SD Card from the PC and insert into the SD card slot on the right side of the Smart Copier. See Figure 2.

.scf file type is necessary for the Smart Copier

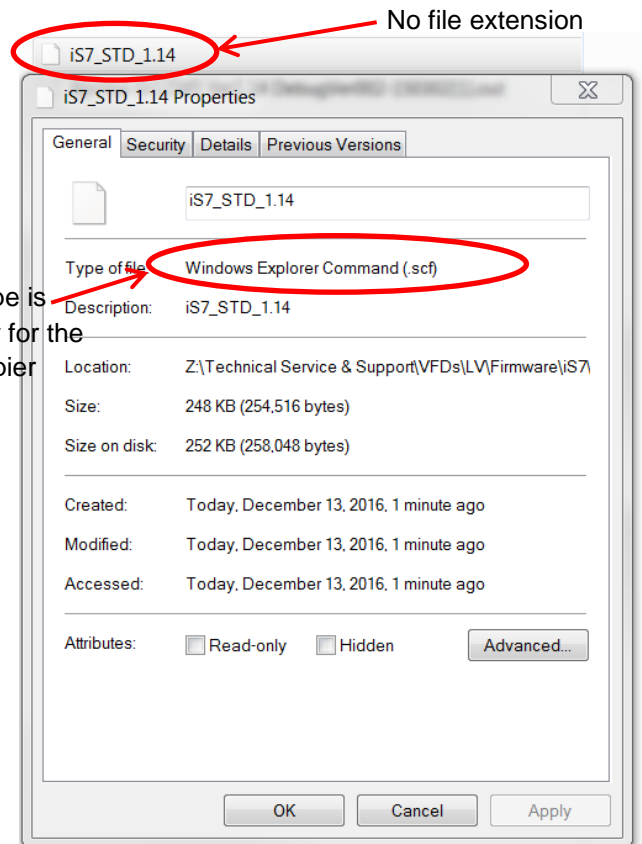


Figure 1



Figure 2

# LSIS VFD Firmware Flash Procedure

## iS7

### 3. Connecting to the VFD

- a. Install the provided AA batteries into the battery compartment on the back of the Smart Copier.
- b. Connect the 10-pin ribbon cable to the top of the Smart Copier
- c. Connect the other end of the ribbon cable to the correct “iS7 Main” Gender for the VFD which is being flashed.
- d. The connection setup should look like Figure 3.



Figure 3

- e. **Power down the VFD.** The VFD **must** be powered down when flashing the firmware.
- f. Slide the Gender housing back to expose the pins which will be connected to the drives flash port. See Figure 4.

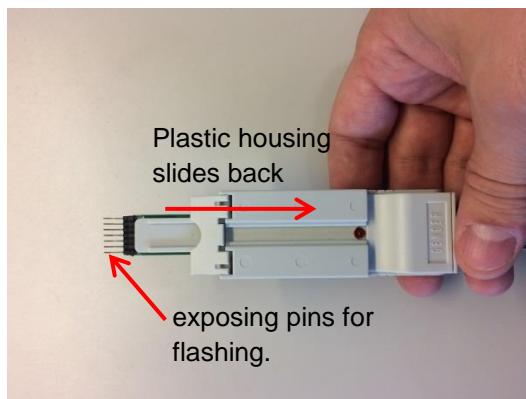


Figure 4

# LSIS VFD Firmware Flash Procedure

## iS7

- g. Gain access to the flash port by removing the keypad and the front cover. See Figure 5.

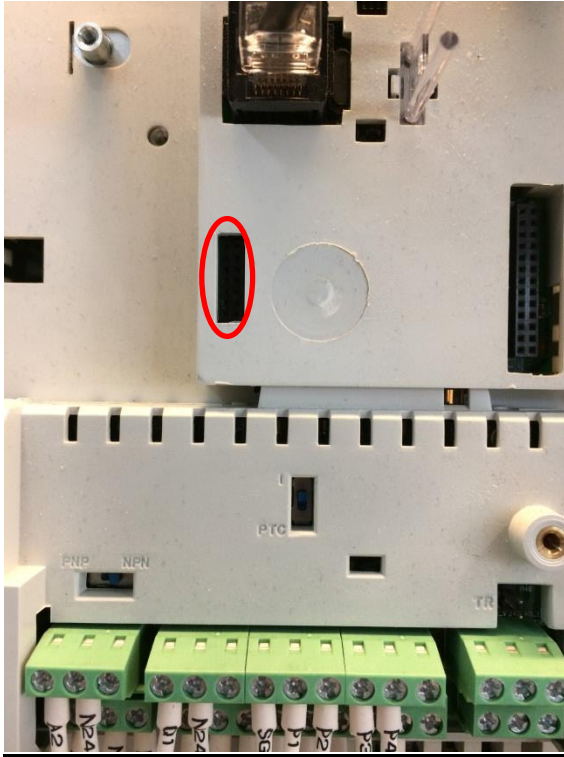


Figure 5

# LSIS VFD Firmware Flash Procedure

## iS7

- h. Connect the “iS7 Main” Gender to the VFD flash port. Take note that the Gender connection direction and placement must be correct. This is printed on the Gender board and also explained in Figure 6 below. The GND pin should be on the bottom and all 7 pins should be plugged in to the right side of the flash port.

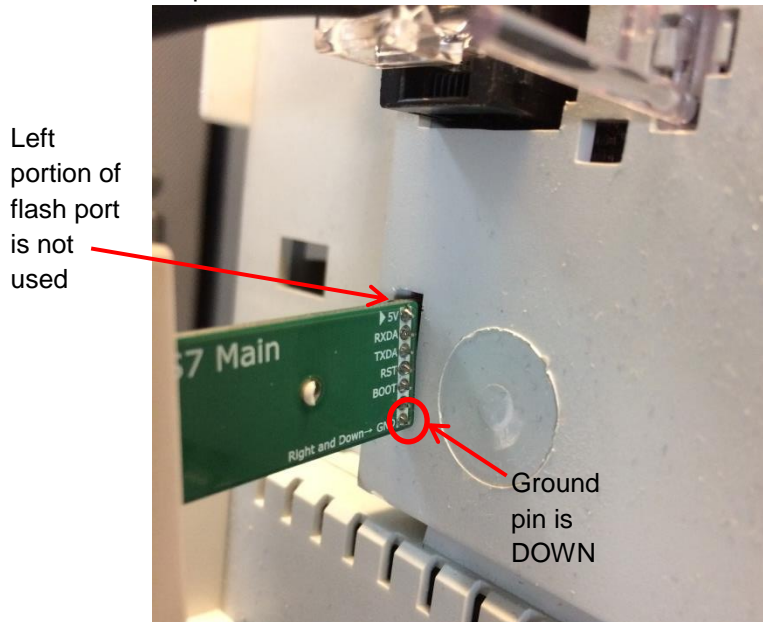


Figure 6

#### 4. Flashing the VFD

- a. Power on the Smart Copier with the ON/OFF switch located on the left side of the Smart Copier.
  - b. At power up the screen will display “MAIN Board Firmware Download” (flashing).
  - c. Press the ENTER key to view the available firmware files.
  - d. Use the UP and DOWN arrows to highlight the firmware file which was copied to the SD Card in Section 2.
  - e. Press the ENTER key once to select the file and then ENTER again to start the flashing process.
  - f. The flashing process will take about 1 minute to complete. Upon completion the Smart Copier will flash “100% Success.”
- Note: If the status % bar freezes up and then fails, check the direction of the Gender and confirm it matches the direction discussed earlier.*
- g. Power off the Smart Copier, disconnect the Gender, and reassemble the drive.
  - h. CNF10 can be used to verify the proper Firmware version.

# LSIS VFD Firmware Flash Procedure

## iS7

### 5. Setting the VFDs kW

After flashing an iS7 VFD the kW capacity must be set. Follow the below steps.

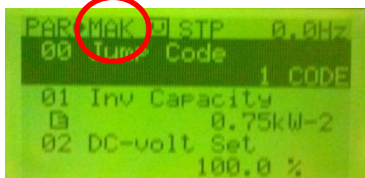
- a. Hold the ESC button
- b. While holding the ESC button... →
  1. press the UP button
  2. then the DOWN button
  3. then the PROG/ENT button



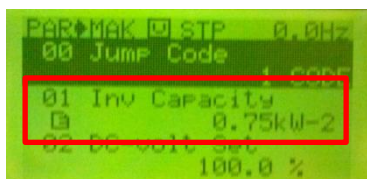
- c. After this is done properly the Master Password screen will appear. Set this to A57C.



- d. Press MODE to get into the Parameter Group.
- e. Press the Left arrow to display the MAK Group. (If you cannot see the MAK Group then the code was entered incorrectly).



- f. In the MAK Group enter the correct drive Capacity (kW) and Voltage in MAK01 (use the VFDs nameplate to verify the drive kW size first, use the HD kW rating). i.e. 0.75kW-2 = 75kW, 230V



- g. Complete.