

Accessory (Key Lock)

■ Key Lock with Kirk Key(CN-22) (AN Option, UVL/UVM Only)

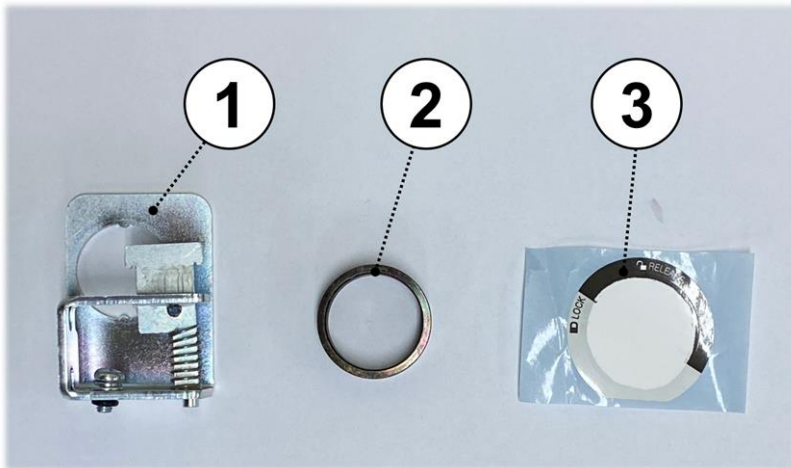
The key lock keeps the safe from unexpected accidents by closing the breaker. When the key lock is in on 'LOCK' position, it prevents the closing the circuit breaker both electrically and mechanically.

1. Installation

The LS provides key lock brackets and other parts only. Following the assembly instruction below.

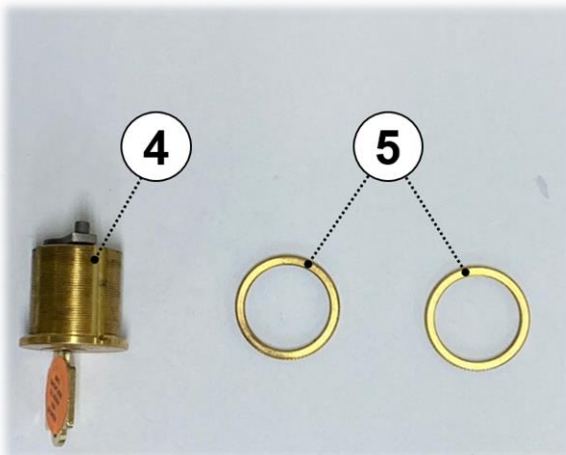
A. Assembling the kirk key with bracket.

a. Before starting assembly, make sure that the parts and its quantities are correct by comparing with the picture below.



- ① Bracket Ass'y (1ea)
- ② Cover (1ea)
- ③ Sticker (1ea)

<Picture 1 Parts of Kirk Key(CN-22) Frame >

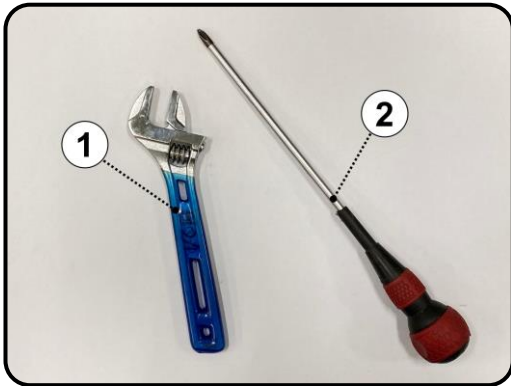


- ④ Kirk Key (CN-22, 1ea)
- ⑤ Fastening ring (2ea)

<Picture 2 Parts of Kirk Key(CN-22) >

Accessory (Key Lock)

■ Key Lock with Kirk Key(Single) (AN Option)

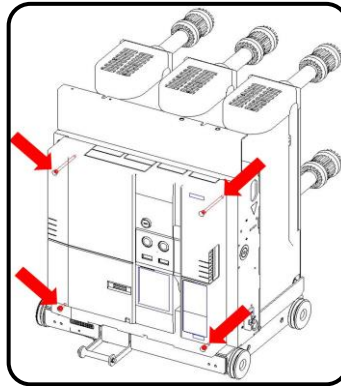


<Picture 3 Required tools>

- ① Adjustable Spanner (1ea)
- ② Screw Driver(+) (1ea)



<Picture 4>



<Picture 5>

a. Unfastening the screw bolt by using screw driver.

There are 4 screw bolts which needs to unfasten.(See Picture 4)

After unfastening, taking off the cover. (See Picture 5)

Accessory (Key Lock)

■ Key Lock with Kirk Key(Single) (AN Option)



<Picture 3>

b. Inserting the cover(2) to the key lock(4).



<Picture 4>

c. Turning the key lock for 90 degree counter clockwise. Then Inserting the key lock to bracket(1). Serial Numbers are in left side of the key lock. See Picture 4.



<Picture 5>

d. Applying a little of 'Loctite' and inserting the ring(5) and fastening the key lock(4) loosely. See Picture 5

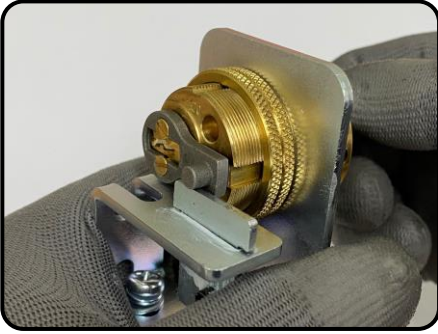


<Picture 6>

e. After fastening, turning the key 90 degree clockwise. See Picture 6

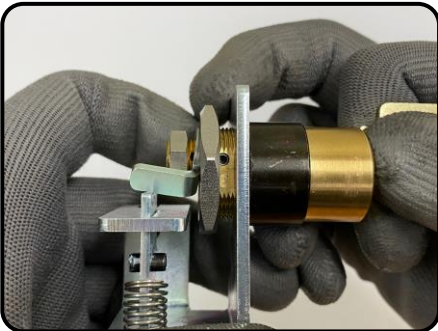
Accessory (Key Lock)

■ Key Lock with Kirk Key(Single) (AN Option)



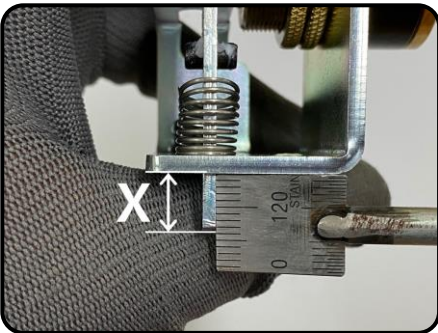
<Picture 7>

f. Turning the key 90 degree counter clockwise for making 'LOCK' status. Then removing the key.



<Picture 8>

g. Fastening the key lock(4) tightly.



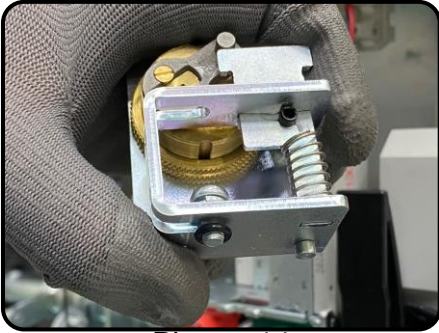
<Picture 9>

h. After fastening, measuring the dimension X.
When the key lock is 'LOCK', the dimension X is 7~9.5mm. When the key lock is 'UNLOCK', the dimension X is less than 1mm.

Accessory (Key Lock)

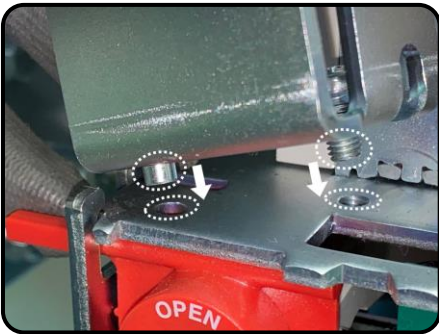
■ Key Lock with Kirk Key(Single) (AN Option)

B. Assembling the key lock with the circuit breaker (UVL/UVM Type)



<Picture 14>

a. Remove the rubber ring.



<Picture 15>

b. Insert the round tip on key lock to the hole which on the top cover of the mechanism. Fastening the screw bolt loosely. The key lock should be 'UNLOCK' status.



<Picture 16>

c. Keep pushing the 'OPEN' button, then turning the key 90 degree counter clockwise for making 'LOCK' status. After that removing the key.



<Picture 17>

d. Fastening the screw bolt tightly.

Accessory (Key Lock)

■ Key Lock with Kirk Key(CN-22) (AN Option)

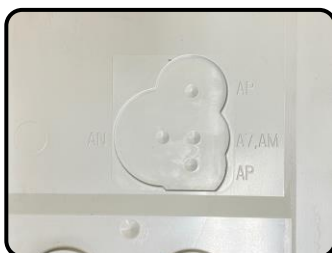
C. Hole Cutting (UVL/UVM Type)



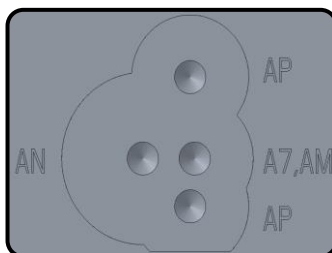
<Picture 18>

a. Prepare the Tools

- ① Impact Driver (1ea)
- ② Hole Saw(Ø36mm) (1ea)

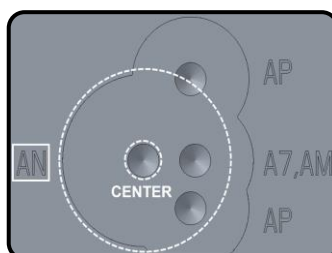


<Picture 19.a>

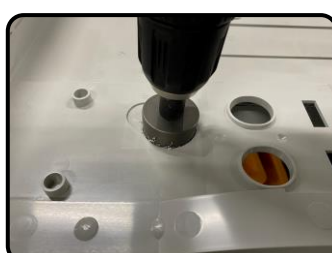


<Picture 19.b>

b. There are several marks on the rear side of front cover. These marks are indicates the center of the key lock hole.

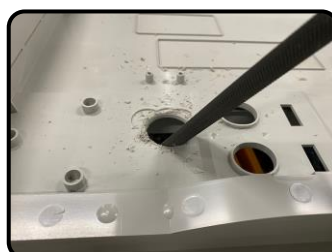


<Picture 20.a>



<Picture 20.b>

c. For drilling a key lock hole, use Ø36mm hole saw. For single key lock, drilling 'AN' position. See picture 20.



<Picture 21.a>



<Picture 21.b>

d. Filing the burr on key lock hole. Attaching the sticker on the front cover.



<Picture 22>

e. Removing the key and put on the front cover.