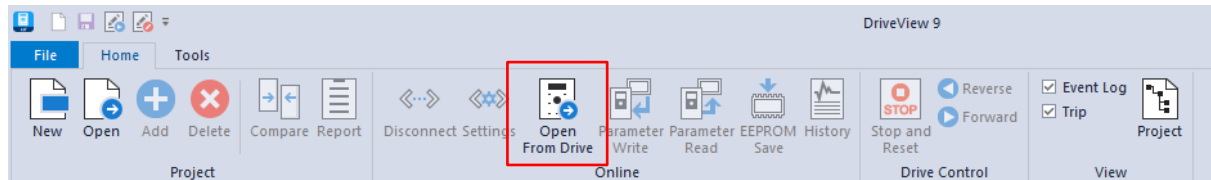


Improve and add functionality

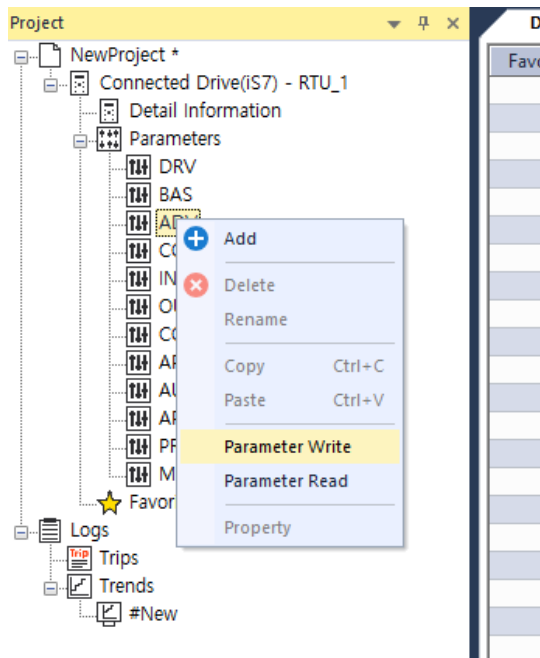
1) Add Open from Drive

Added ability to create projects from linked drives. Drive communication settings make it easier to create projects by trying to connect and creating projects.



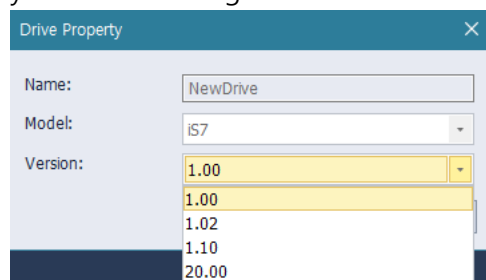
2) Add write/read functionality by group

Added ready-to-use write/read functionality to the selected items in the project tree. When connected online, the menu is activated and works



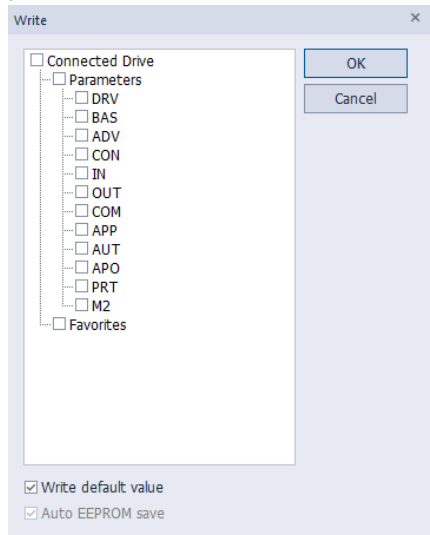
3) Add Version Change Feature

Added the ability to change the version of the project registered drive. This feature is useful if you need to change the version.



4) Add EPROM auto-save functionality

Added ability to automatically save EEPROM after writing full parameters. Occasionally, you can resolve the phenomenon that the parameters you set when you reboot the drive after writing the parameters are not saved.

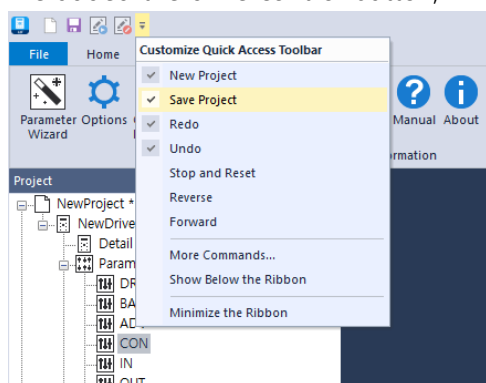


5) Add a default value display to the Parameters

Improved to display default values in the Parameters pane. To display the default values, you must set them in Options..

6) Add the drive control function button to the Quick Launch Tool

We added the drive control button, which is a common feature, to the Quick Launch Tool (QAT).



7) Event log, adding copy/delete function to trip window

Added ability to copy/delete items displayed in event log, trip window.

Event Log	
Event Occurred Time	Event Description
2022/11/01 10:06:31	Connected Drive(iS7) : Connect
2022/11/01 10:05:38	Connected Drive(iS7) : Disconnect
2022/11/01 09:09:43	New Drive(iS7) : Connect
2022/11/01 09:09:34	New Drive(iS7) : Disconnect

Copy

Clear

8) Added write/read functionality to H100 scheduling operation

Added the ability to write/read directly to the drive after setting the functionality within the screen.

9) Add automatic redirection

Added the ability to reconnect in case of disconnection during online connection with Drive.

10) Add graph expert options

Added the ability to modify various options related to trend graphs.

11) Improving parameter detail window behavior

Improved the need to continue clicking the Read button while connected online. <,> The function to perform reading first during operation has been added.

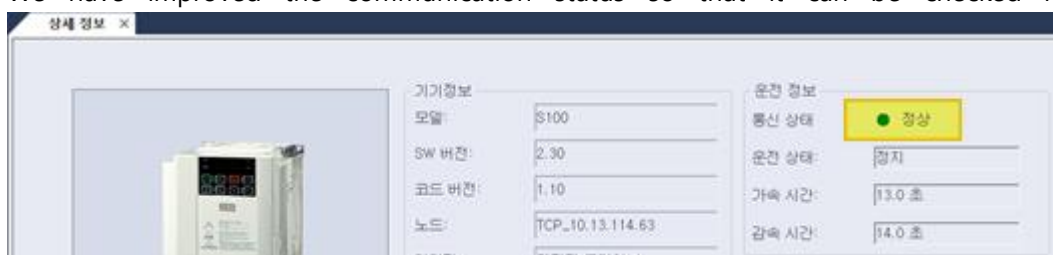
12) Improved display of date and time parameters

Regarding the date and time parameters, we have improved the contents that are displayed only in numbers. It looks the same as the keypad, and you can see it more clearly

스케줄링 운전	AP3				
즐거찾기	코드	파라미터 이름	쓰기 값	드라이브 값	특성 단위
1 Now Date			2022 / 10 / 21	2022 / 09 / 21	읽기/쓰기
2 Now Time			14:45	14:41	읽기/쓰기 Min
3 Now Weekday			b0000010	b0000010	읽기 Bit
4 Summer T Start			04 / 01	04 / 01	읽기/쓰기
5 Summer T Stop			10 / 31	10 / 31	읽기/쓰기
6 Date Format			YYYY / MM / DD	YYYY / MM / DD	읽기/쓰기
10 Period Status			b0000000000000	b0000000000000	읽기 Bit
11 Period1 StartT			05:33	05:33	읽기/쓰기 Min
12 Period1 Stop T			05:33	05:33	읽기/쓰기 Min
13 Period1 Day			b0000000	b0000000	읽기/쓰기 Bit

13) Improved communication status display

We have improved the communication status so that it can be checked more clearly.



14) Improved auto-discovery of ports

Enhancements have been made to allow faster navigation by scoping. Optionally, you can also modify the scope.

Error correction

1) Error with Quick Launch Tool not saved

After changing the fast execution tool, we modified it to reflect the changes when restarting the program.

2) What happens when the trip history is displayed in reverse to the drive screen?

The trip history and order displayed on the keypad are reversed and modified to display the same.

3) Fix unsaved errors when changing to higher version

Fixed an error where parameter contents were not saved when changing to a higher version.

4) Error in saving to another name for the project name

Fixed an error that saved the project name without reflecting it when saving it as a different name.

5) Error when clicking the >> button in the Parameter Details window, the last line is not selected

Fixed an error that moved to the top line without selecting the last line when clicking the >> button in the parameter detail window.

6) Error with parameter values not displayed normally for read-only parameters

For read-only parameters, error correction was made to ensure that the read value is always updated