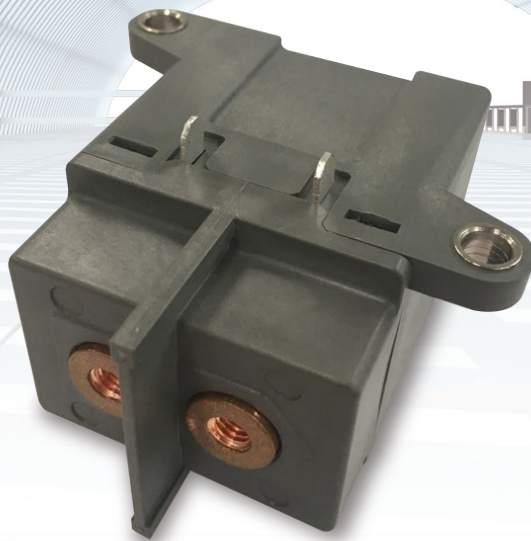


HVDC Relay

GPR200 PCB

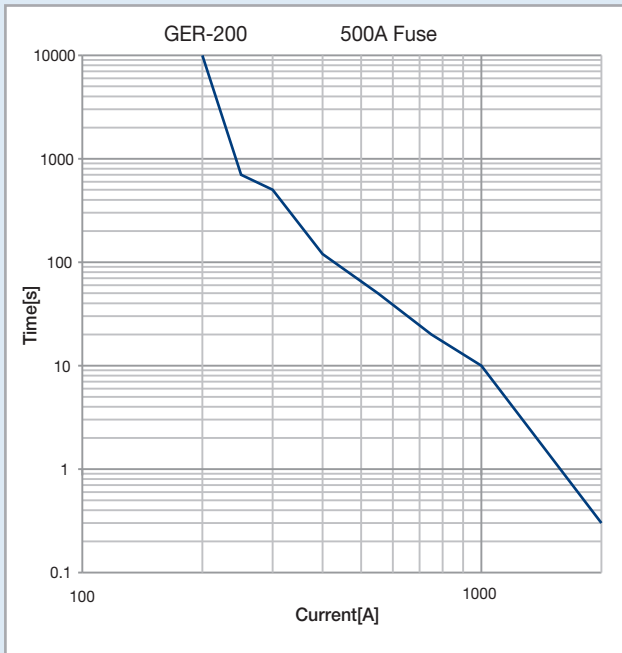
- PCB on-board
- EV & industrial HVDC Relay
- Superior reliability
- Uni-directional



Frame		GPR200	
Pole (P)		1	
Rated insulation voltage (Ui)		DC 500V	
Rated operational voltage (Ue)		DC 450V	
Rating	Continuous current (Ith)		200A (at -40~85°C)
	Rated operational current Ie (A)	DC 450V	200A
	Short time withstand current	500sec	300A
		120sec	400A
	Coil voltage		DC 12V

Characteristics

I-T Curve



1. Contact data

- 1) Max. continuous current: 200A (wire 50mm²)
- 2) Max. switching current (L/R < 1ms)
: 200A 450V (20cpm)
- 3) Contact type: Uni-directional
- 4) Contact voltage drop (Initial): 0.02V at 20A

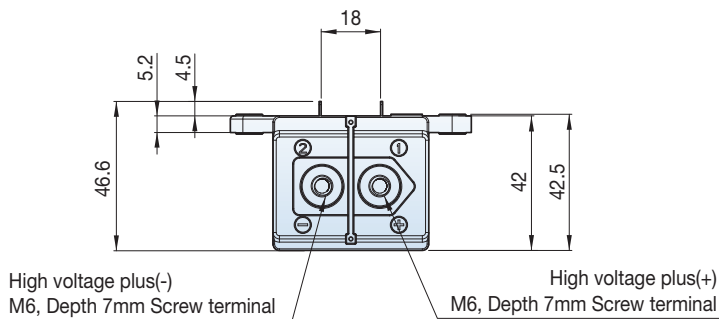
2. Expected life

- 1) Electrical life
: 200A 450V (20cpm): 1,000cycles (Uni-directional)
: 300A 450V (1cpm): 100cycles (Uni-directional)
- 2) Mechanical (60cpm): Min. 200,000ops

3. Withstand voltage

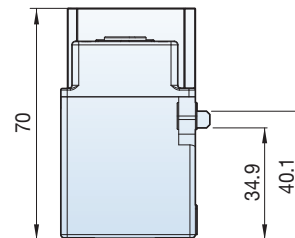
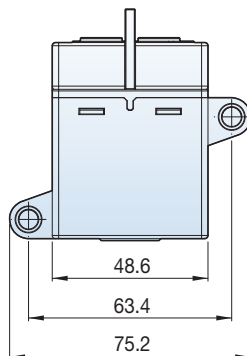
- 1) Contacts & coil: 2,500Vrms/min
- 2) Contacts & frame: 2,500Vrms/min
- 3) Coil & frame: 2,500Vrms/min

Dimensions



General tolerance

Less than 10: ±0.25/10~50: ±0.5
More than 50: ±0.8



www.lsis.com

■ Head Quarter

127 LS-ro (Hogye-dong) Dongan-gu, Anyang-si,
Gyeonggi-Do, 14119, Korea
Tel. 82-2-2034-4902, 4684, 4429 Fax: 82-2-2034-4555



According to The WEEE Directive,
please do not discard the device with your household waste.